

## U-type BLOWER

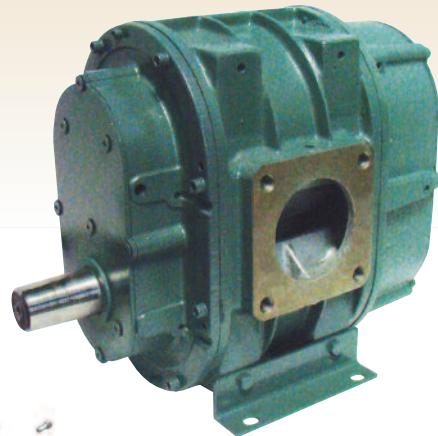
### Product features

U type blowers are differentiated next generation products smoothly operated in high pressure, even in 1.2 kg/cm<sup>2</sup>(bar) pressure working condition with excellent durability and simple design which makes clients' various requirement satisfactory by standardizing and simplifying all the parts and components.

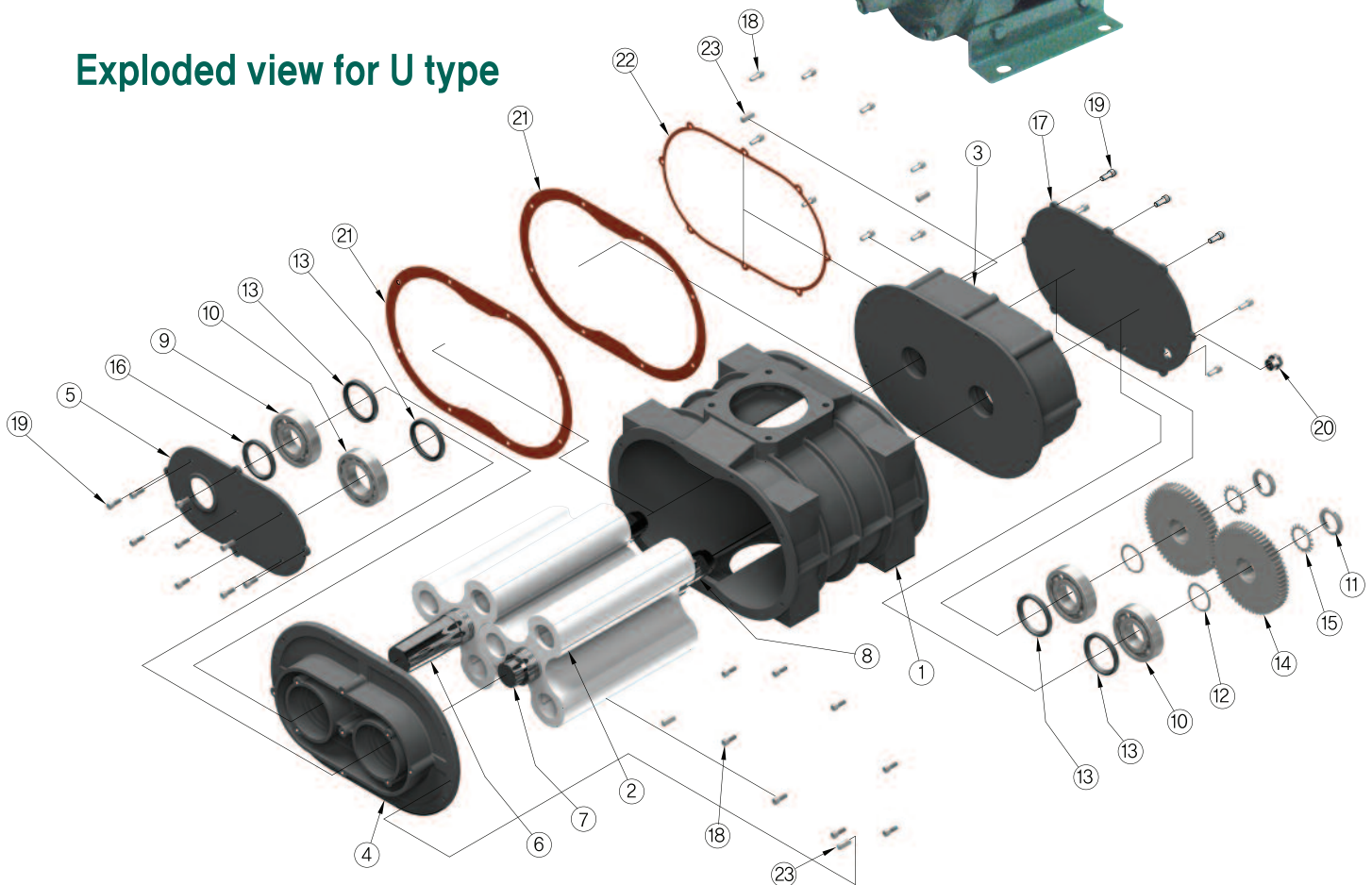
- Casing : Only one casing regardless airflow direction
- Side cover : Simple arranging components and parts for eliminating cumulative allowance
- Simple and easy assembly and disassembly
- Other features are same as current models.

### Features in design and structure

1. Free airflow direction(horizontal and vertical)
2. Standard component for all models
3. Simple arranging components



### Exploded view for U type



No.	DESCRIPTION	MATERIAL	No.	DESCRIPTION	MATERIAL	No.	DESCRIPTION	MATERIAL	No.	DESCRIPTION	MATERIAL
1	CASING	GC200	7	DRIVEN SHAFT(P/S)	SM45C	13	OIL SEAL	SILICON	19	HOLLOW HEX. BOLT	SM30C
2	IMPELLER	GC250	8	SHAF(G/S)	SM45C	14	GEAR	SCM415	20	OIL LEVEL GAUGE	AL
3	SIDE COVER(G/5)	GC200	9	BEARING	STB	15	LOCK WASHER	SS400	21	GASKET(SIDE COVER)	PAPER
4	SIDE COVER(P/S)	GC200	10	BEARING	STB	16	OIL SEAL	RUBBER	22	GASKET(GEAR COVER)	PAPER
5	BEARING COVER	SS400	11	LOCK NUT	SM30C	17	GEAR COVER	GC200	23	LOCK PIN	SM55C
6	DRIVING SHAFT(P/S)	SM45C	12	SNAP RING	SK5	18	HOLLOW HEX. BOLT	SM30C			

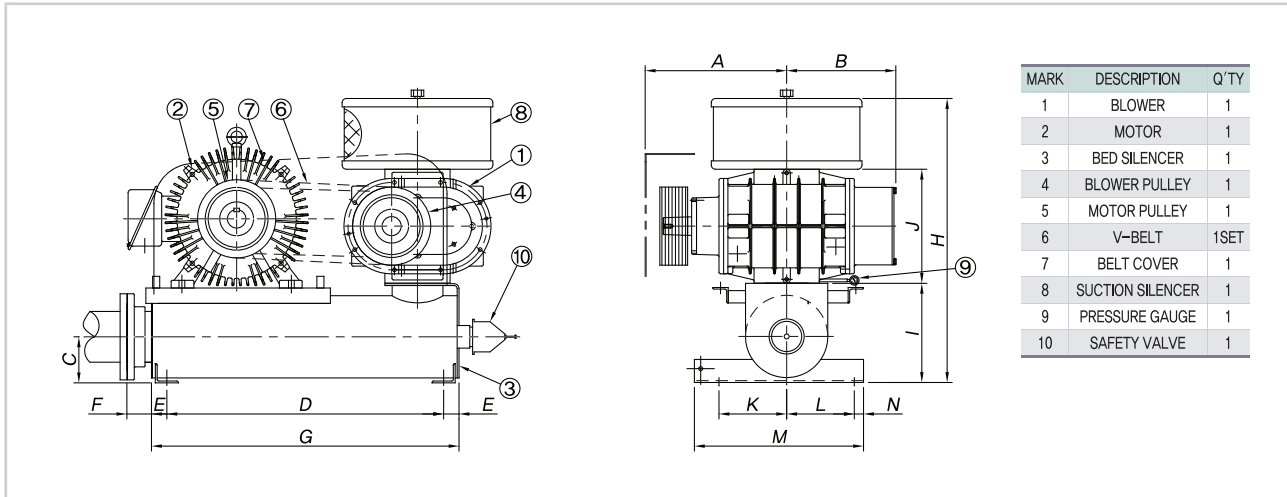
# Positive Displacement Blower Performance Table

BORE SIZE (mm)	SPEED (rpm)	Suction air volume Qs[m <sup>3</sup> /min] & Required Shaft Power La(kW) at each discharge pressure																							
		0.1kg/cm <sup>2</sup> (9.8kPa)		0.2kg/cm <sup>2</sup> (19.6kPa)		0.3kg/cm <sup>2</sup> (29.4kPa)		0.4kg/cm <sup>2</sup> (39.2kPa)		0.5kg/cm <sup>2</sup> (49kPa)		0.6kg/cm <sup>2</sup> (58.8kPa)		0.7kg/cm <sup>2</sup> (68.6kPa)		0.8kg/cm <sup>2</sup> (78.5kPa)		0.9kg/cm <sup>2</sup> (88kPa)		1.0kg/cm <sup>2</sup> (98kPa)		1.1kg/cm <sup>2</sup> (108kPa)		1.2kg/cm <sup>2</sup> (118kPa)	
		Qs (m <sup>3</sup> /min)	La (kW)	Qs (m <sup>3</sup> /min)	La (kW)	Qs (m <sup>3</sup> /min)	La (kW)	Qs (m <sup>3</sup> /min)	La (kW)	Qs (m <sup>3</sup> /min)	La (kW)	Qs (m <sup>3</sup> /min)	La (kW)	Qs (m <sup>3</sup> /min)	La (kW)	Qs (m <sup>3</sup> /min)	La (kW)	Qs (m <sup>3</sup> /min)	La (kW)	Qs (m <sup>3</sup> /min)	La (kW)	Qs (m <sup>3</sup> /min)	La (kW)	Qs (m <sup>3</sup> /min)	La (kW)
50	1240	1.5	0.7	1.3	1.1	1.2	1.4	1.0	1.7	0.9	2.0	0.7	2.3												
	1450	1.8	0.9	1.6	1.2	1.5	1.6	1.3	1.9	1.2	2.3	1.0	2.7												
	1750	2.3	1.0	2.1	1.5	1.9	2.0	1.8	2.4	1.6	2.9	1.5	3.3												
65	1240	2.0	1.0	1.7	1.4	1.5	1.7	1.3	2.1	1.2	2.4	1.0	2.6												
	1450	2.4	1.1	2.1	1.6	1.9	2.0	1.7	2.4	1.5	2.9	1.4	3.4												
	1750	3.1	1.3	2.8	1.9	2.5	2.5	2.3	3.2	2.1	3.9	2.0	4.6												
80	1150	3.8	1.9	3.4	2.4	3.0	3.0	2.7	3.7	2.5	4.3	2.2	4.9	2.0	5.4	1.8	6.0	1.6	6.6	1.5	7.1	1.3	7.6	1.2	8.1
	1300	4.5	2.1	4.1	2.7	3.7	3.4	3.4	4.3	3.1	5.1	2.9	5.8	2.7	6.6	2.5	7.5	2.4	8.3	2.2	9.1	2.0	9.9	1.9	11.1
	1450	5.2	2.3	4.8	2.9	4.4	3.9	4.1	4.9	3.8	5.8	3.6	6.8	3.4	7.8	3.2	8.8	3.1	9.9	2.9	11.0	2.8	12.2	2.7	13.5
	1500	5.4	2.4	5.0	3.0	4.6	4.0	4.3	5.0	4.0	6.0	3.8	7.0	3.6	8.1	3.4	9.1	3.2	10.3	3.1	11.4	2.9	12.6	2.8	13.9
	1750	6.6	2.7	6.2	3.5	5.8	4.7	5.5	6.0	5.3	7.2	5.0	8.4	4.8	9.7	4.6	11.0	4.4	12.3	4.3	13.5	4.1	15.0	3.9	16.5
	2040	8.0	3.0	7.6	4.0	7.1	5.3	6.8	6.8	6.4	8.1	6.1	9.5	5.9	10.8	5.7	12.4	5.5	13.8	5.3	15.3	5.1	16.9	4.9	18.5
100	1150	5.1	2.3	4.7	3.1	4.4	4.1	4.0	5.1	3.8	6.2	3.5	7.3	3.3	8.3	3.1	9.5	2.9	10.6	2.7	11.6	2.6	12.8	2.4	14.2
	1450	6.9	2.7	6.5	3.8	6.1	5.1	5.8	6.5	5.5	7.8	5.2	9.2	5.0	10.6	4.8	12.0	4.6	13.3	4.4	15.0	4.3	16.8	4.1	18.4
	1500	7.2	2.8	6.7	3.9	6.4	5.2	6.0	6.7	5.7	8.0	5.5	9.5	5.2	10.9	5.1	12.4	4.8	13.8	4.7	15.4	4.5	17.0	4.3	18.9
	1750	8.6	3.2	8.2	4.4	7.9	6.1	7.5	7.7	7.2	9.4	6.9	11.0	6.6	12.7	6.3	14.3	6.1	16.0	5.8	17.8	5.7	19.7	5.5	21.6
	2040	10.4	3.6	9.9	5.0	9.5	6.8	9.2	8.7	8.8	10.6	8.4	12.4	8.1	14.2	7.8	16.0	7.5	17.8	7.2	19.6	7.0	21.6	6.8	23.7
125	1180	13.7	4.7	12.9	6.8	12.2	9.2	11.6	11.7	11.2	14.3	10.8	17.0	10.4	19.5	10.0	22.2	9.8	25.1	9.5	28.0	9.3	30.9	9.1	34.0
	1470	17.7	5.9	16.9	8.5	16.3	11.6	15.7	14.8	15.2	18.1	14.7	21.3	14.3	24.7	14.0	28.1	13.7	31.7	13.4	35.2	13.1	38.6	12.9	42.5
	1750	21.6	7.0	20.8	9.8	20.1	13.6	19.6	17.4	19.1	21.3	18.6	25.1	18.3	29.0	17.9	33.0	17.6	37.2	17.3	41.3	17.0	45.5	16.8	49.9
	1940	24.3	7.5	23.7	10.8	23.2	14.9	22.6	19.1	22.1	23.5	21.7	27.8	21.4	32.2	21.0	36.6	20.7	41.2	20.3	45.8	20.1	50.7	19.8	55.4
150	1180	22.9	7.2	21.8	10.8	21.0	14.7	20.3	18.9	19.6	23.3	18.9	27.5	18.3	32.0	17.8	36.1	17.1	40.0	16.6	44.1	16.0	48.5	15.6	52.8
	1470	29.3	8.9	28.2	13.2	27.3	18.1	26.5	23.3	25.8	28.7	25.1	33.8	24.5	39.1	23.9	44.2	23.4	49.7	22.8	54.9	22.3	59.8	21.8	65.4
	1750	35.8	10.3	34.7	15.5	33.6	21.2	32.8	27.4	32.1	33.7	31.6	40.0	30.9	46.0	30.3	52.0	29.7	58.3	29.2	64.5	28.6	70.8	28.1	76.9
	1940	40.3	11.2	39.4	16.9	38.5	23.3	37.7	30.2	37.0	37.0	36.4	43.9	35.7	50.7	35.2	57.5	34.7	64.7	34.3	71.6	33.8	78.9	33.4	86.3
200	880	42.3	11.3	40.6	19.0	39.3	26.3	38.3	33.9	37.3	41.5	36.4	49.3	35.4	57.1	34.6	65.3	33.8	73.6	33.1	82.1	32.3	91.4	31.5	101.1
	970	47.1	12.3	45.5	20.6	44.3	28.9	43.2	37.4	42.1	45.7	41.2	54.4	40.2	63.0	39.4	71.9	38.5	81.2	37.8	90.8	37.0	100.7	36.2	111.6
	1100	54.2	14.0	52.8	23.1	51.4	32.3	50.3	42.3	49.3	52.1	48.3	61.7	47.3	71.5	46.2	81.2	45.4	91.9	44.5	102.2	43.7	113.6	42.9	125.8
	1180	58.5	15.1	56.9	24.7	55.5	34.6	54.3	45.2	53.2	55.7	52.1	66.0	51.0	76.6	50.0	87.2	49.2	98.6	48.2	109.8	47.3	121.9	46.4	135.1
	1470	74.2	18.3	72.0	30.6	70.5	43.2	68.9	56.2	67.6	69.5	66.5	82.7	65.3	95.8	64.1	109.0	63.0	122.4	62.1	136.9	61.1	152.3	60.0	167.9
250	970	89.5	21.5	87.2	36.4	85.3	51.5	83.7	67.2	82.3	82.9	81.1	98.7	79.8	114.5	78.6	130.4	77.3	145.9	76.2	162.7	75.1	180.3	74.2	198.9
	880	87.1	22.9	85.1	36.8	82.9	52.2	81.1	68.5	79.5	84.6	78.0	100.0	76.7	115.7	75.3	131.4	74.0	147.3	72.7	162.2	71.3	177.4	70.0	193.1
	980	98.5	25.3	96.1	40.8	94.1	58.2	92.1	76.3	90.5	94.2	89.0	111.5	87.5	128.9	86.2	146.3	84.9	163.2	83.5	180.1	82.3	197.0	80.9	213.6
	1150	118.0	29.7	114.9	48.1	112.3	68.6	110.2	89.9	108.1	114.5	106.4	130.6	104.8	150.8	103.2	170.3	101.7	189.9	100.2	209.0	98.7	227.9	97.1	246.3
	1280	133.2	33.0	130.1	53.9	127.2	76.6	125.3	100.3	123.3	123.1	121.4	145.3	119.3	167.0	117.6	188.2	116.0	209.4	114.6	231.1	113.0	251.8	111.5	273.2
300	730	104.8	28.6	102.3	44.5	99.6	62.8	97.2	82.4	95.2	102.2	93.5	122.1	91.8	141.2	90.0	160.6	88.4	180.7	87.0	201.6	85.4	222.6	84.0	244.5
	800	116.9	30.5	114.2	48.4	111.4	68.6	108.6	89.7	106.5	111.4	104.4	132.5	102.8	153.7	101.2	174.8	99.5	196.7	98.3	219.1	96.8	243.1	95.4	267.1
	880	130.0	33.4	126.9	52.4	124.2	74.7	121.3	97.6	119.0	121.3	117.0	144.3	115.3	168.0	113.9	191.3	112.3	215.2	110.8	239.1	109.4	264.4	107.9	289.6
	980	146.3	37.0	142.9	57.6	140.3	81.9	137.8	107.7	135.4	133.6	133.4	159.5	131.5	185.5	129.8	212.1	128.2	237.9	126.7	264.6	125.2	292.1	123.8	318.7
	1150	175.9	43.2	171.8	67.0	168.5	96.1	166.0	126.6	163.4	156.5	161.2	186.2	158.9	215.2	157.3	245.2	155.4	274.8	153.8	304.6	152.3	335.2	151.0	366.7
350	580	177	52	173	76	170	107	167	140	163	173	160	205	157	236	154	268	152	300	150	334	147	369	145	404
	650	204	58	199	84	195	119	191	155	188	191	185	226	182	260	179	297	177	332	175	369	172	408	170	447
	700	227	62	221	90	216	128	212	168	206	206	206	245	203	283	200	321	198	361	195	399	193	438	191	479
	750	248	66	242	97	236	137	232	179	228	220	225	261	222	302	220	343	217	383	215	426	213	468	211	509
	800	270	70	263	102	257	146	253	190	249	234	245	277	242	320	240	363	237	407	234	449	232	491	231	537
400	580	197	57	193	82	190	113	186	148	182	184	178	219	174	253	171	287	168	319	165	353	162	387	159	421
	650	227	63	223	92	218	129	214	169	210	209	207	249	203	287</										

# SPECIFICATIONS

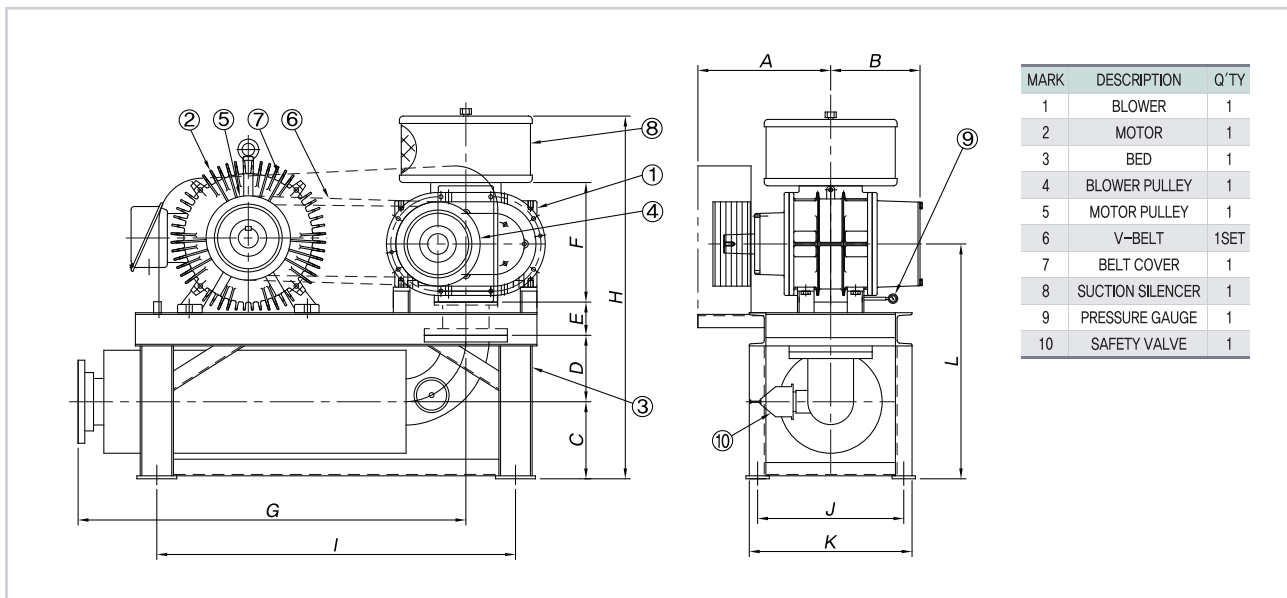
# KFM U-type blowers

## UK TYPE Positive Displacement Blower (V-Belt Type)



TYPE	DIM	A	B	C	D	E	F	G	H	I	J	K	L	M	N
SUK050		151	175	80	455	32.5	95	520	559	167	218	130	130	360	25
SUK065		172	196	90	475	32.5	125	540	575	167	218	130	130	360	25
SUK/HUK080		240	203	120	620	40	40	700	635	170	240	145	145	370	25
SUK/HUK100		280	225	120	690	40	70	770	655	160	240	145	145	370	25
SUK/HUK125		380	275	140	900	50	80	1000	862	200	350	220	220	550	30
SUK/HUK150		460	355	150	900	50	80	1000	923	230	371	220	220	550	30

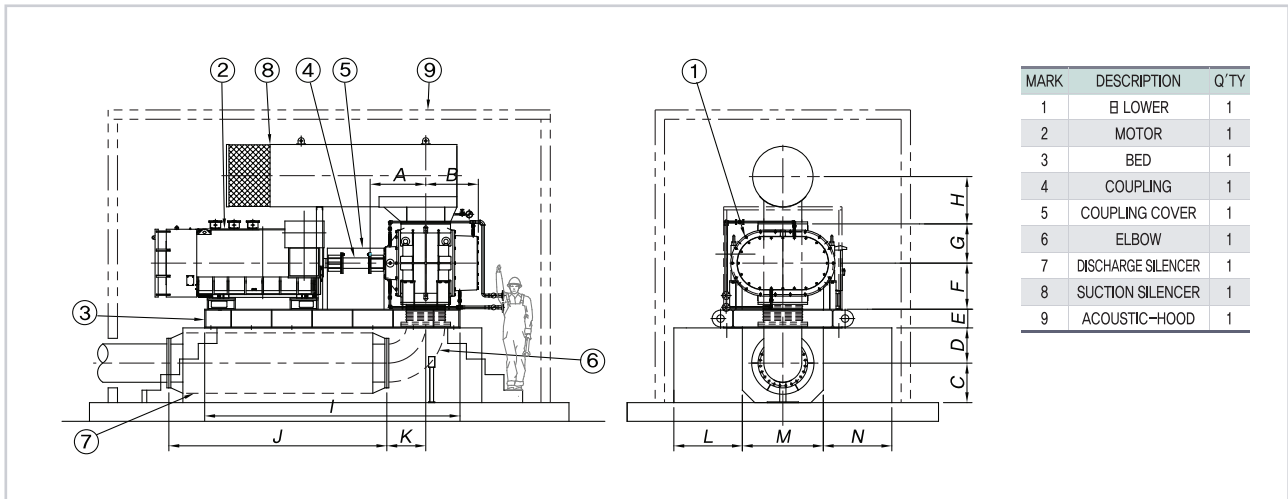
- Discharge end flange standard of the rest is KS10K.FF.
- The dimension of this catalog may be changed without prior notice in order to improve the performance of the product.



TYPE	DIM	A	B	C	D	E	F	G	H	I	J	K	L
SUK/HUK200		570	429	210	215	150	500	1400	1480	1500	640	700	826
SUK/HUK250		660	516	250	264	200	680	1550	1745	1700	680	750	1055
SUK300		730	590	280	314	200	800	1800	1900	1900	720	800	1198
SUK350		840	730	300	355	200	1000	1900	2340	2100	880	960	1385

- Discharge end flange standard of the rest is KS10K.FF.
- The dimension of this catalog may be changed without prior notice in order to improve the performance of the product.

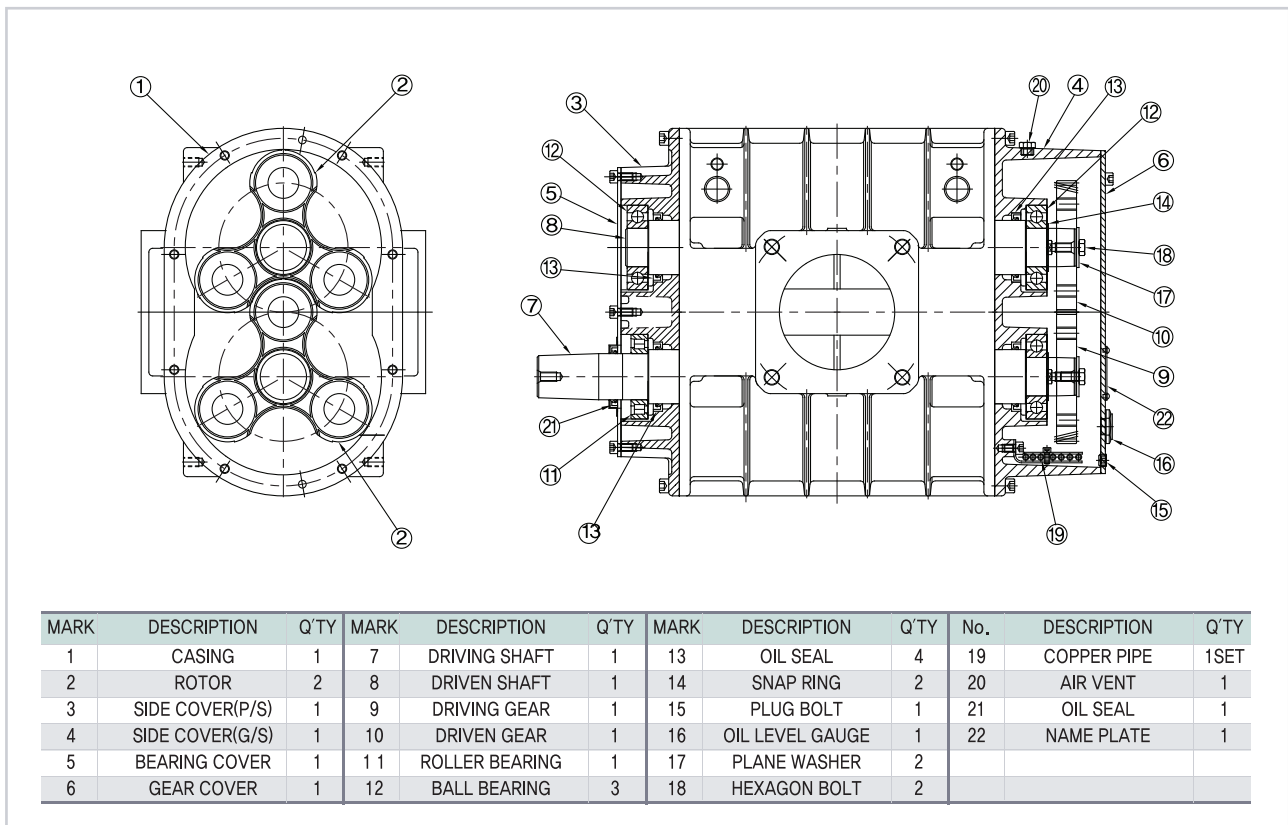
## UK TYPE Positive Displacement Blower (Coupling Type)



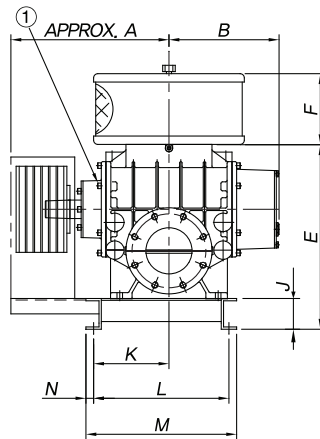
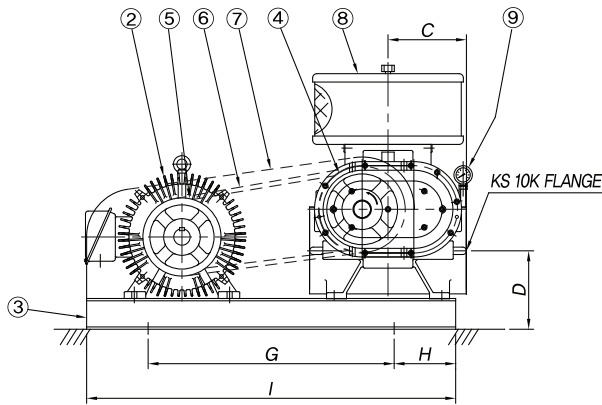
TYPE	DIM	A	B	C	D	E	F	G	H	I	J	K	L	M	N
SUK400		835	820	530	490	250	650	530	600	3600	3400	420	900	1000	900
SUK500		1010	920	580	510	250	650	530	600	4000	3400	515	900	1000	900
SUK600		893	844	635	566	300	740	630	760	4100	3500	625	1100	1300	1100
SUK700		1032	980	650	580	300	740	630	810	4350	3500	730	1100	1300	1100

- Discharge end flange standard of the rest is KS10K, FF.
- The dimension of this catalog may be changed without prior notice in order to improve the performance of the product.

## UK TYPE Sectional Drawing



## UT TYPE Positive Displacement Blower (V—Belt Type)

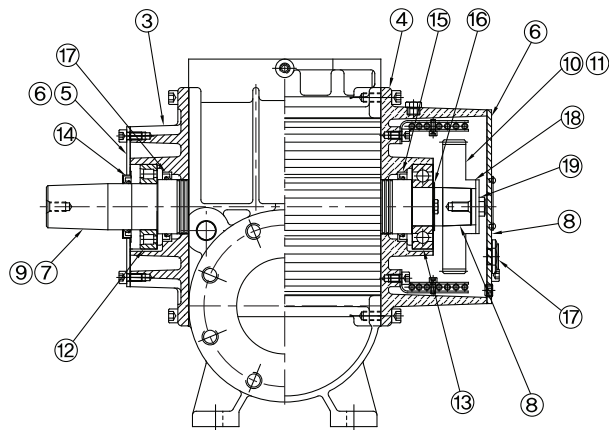
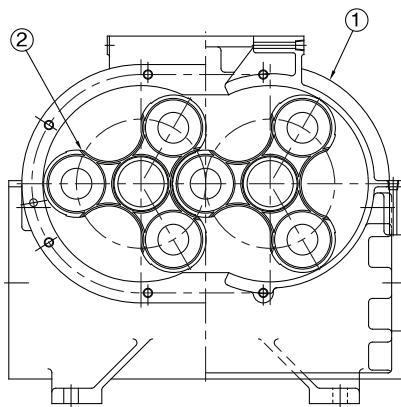


MARK	DESCRIPTION	Q'TY
1	B LOWER	1
2	MOTOR	1
3	BED	1
4	BLOWER PULLEY	1
5	MOTOR PULLEY	1
6	V-BELT	1SET
7	BELT COVER	1
8	SUCTION SILENCER	1
9	PRESSURE GAUGE	1

TYPE	DIM	A	B	C	D	E	F	G	H	I	J	K	L	M	N
SUT/HUT080		294	202	188	200	430	140	600	150	900	75	135	360	400	20
SUT/HUT100		315	225	188	210	455	160	600	150	900	75	165	400	440	20
SUT/HUT125		400	278	256	255	576	200	800	200	1200	100	195	440	490	25
SUT/HUT150		514	358	255	255	600	230	800	200	1200	100	245	440	490	25
SUT/HUT200		570	429	355	300	730	400	1050	250	1550	125	270	640	700	30
SUT/HUT250		660	516	472	385	989	400	1600	150	1900	150	255	570	640	35
SUT300		730	590	520	385	1145	500	1800	200	2200	200	370	740	820	40
SUT350		840	730	695	485	1390	500	2100	200	2500	200	490	920	1000	40

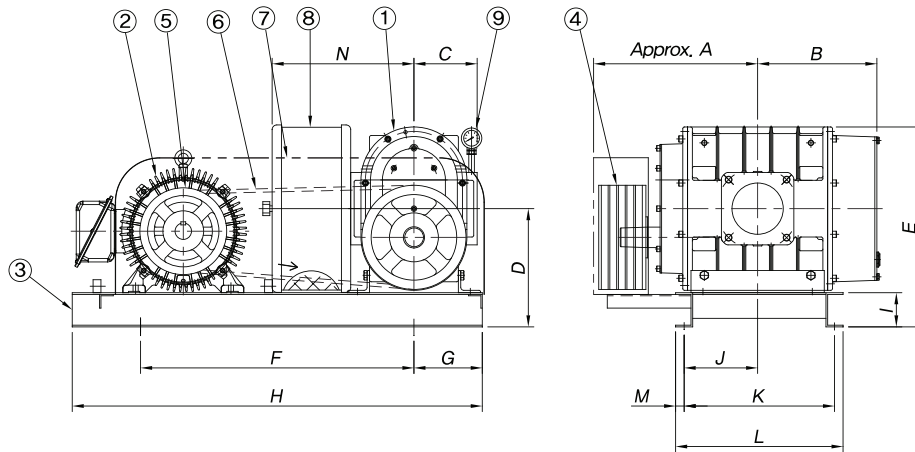
- Discharge end flange standard of the rest is KS10K.FF.
- The dimension of this catalog may be changed without prior notice in order to improve the performance of the product.

## UT TYPE Sectional Drawing



MARK	DESCRIPTION	Q'TY	MARK	DESCRIPTION	Q'TY	MARK	DESCRIPTION	Q'TY	No.	DESCRIPTION	Q'TY
1	CASING	1	6	GEAR COVER	1	11	DRIVEN GEAR	1	16	SNAP RING	2
2	ROTOR	2	7	DRIVING SHAFT	1	12	ROLLER BEARING	1	17	OIL LEVEL GAUGE	1
3	SIDE COVER(P/S)	1	8	SHAFT(G/S)	2	13	BALL BEARING	3	18	PLANE WASHER	2
4	SIDE COVER(G/S)	1	9	DRIVEN SHAFT(P/S)	1	14	OIL SEAL	1	19	HEXAGON BOLT	2
5	BEARING COVER	1	10	DRIVING GEAR	1	15	OIL SEAL	4			

## UP TYPE Positive Displacement Blower (V—Belt Type)

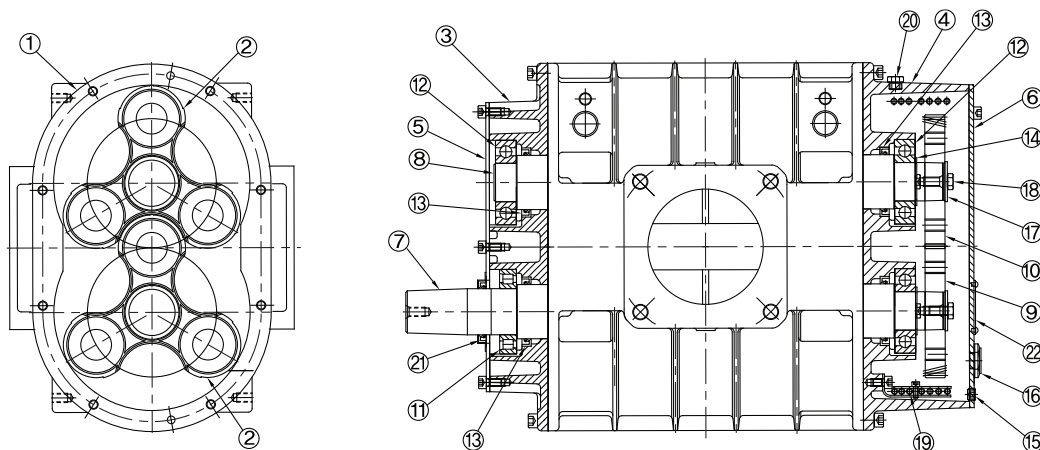


MARK	DESCRIPTION	Q'TY
1	BLOWER	1
2	MOTOR	1
3	BED	1
4	BLOWER PULLEY	1
5	MOTOR PULLEY	1
6	V-BELT	1SET
7	BELT COVER	1
8	SUCTION SILENCER	1
9	PRESSURE GAUGE	1

TYPE	DIM	A	B	C	D	E	F	G	H	I	J	K	L	M	N
SUP050		151	175	95	205	328	500	100	700	75	105	260	300	20	215
SUP065		172	196	95	205	328	500	100	700	75	130	260	300	20	235
SUP/HUP080		294	202	120	249	412	600	150	900	75	125	360	400	20	260
SUP/HUP100		315	225	120	249	412	600	150	900	75	150	400	440	20	280
SUP/HUP125		400	278	175	346	585	800	200	1200	100	175	440	490	25	375
SUP/HUP150		515	358	185	346	585	800	200	1200	100	215	440	490	25	415
SUP/HUP200		570	429	250	477	811	1100	250	1600	125	280	640	700	30	650
SUP/HUP250		660	516	340	600	1045	1350	250	1850	150	332	680	750	35	740

- Discharge end flange standard of SUP050, SUP065 model is KS 5K.FF, and flange standard of the rest is KS10K.FF.
- The dimension of this catalog may be changed without prior notice in order to improve the performance of the product.

## UP TYPE Sectional Drawing



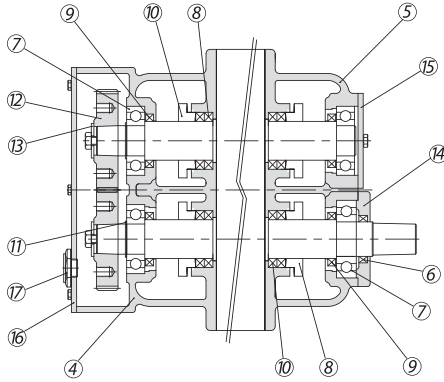
MARK	DESCRIPTION	Q'TY	MARK	DESCRIPTION	Q'TY	MARK	DESCRIPTION	Q'TY	No.	DESCRIPTION	Q'TY
1	CASING	1	7	DRIVING SHAFT	1	13	OIL SEAL	4	19	COPPER PIPE,	1SET
2	ROTOR	2	8	DRIVEN SHAFT	1	14	SNAP RING	2	20	AIR VENT	1
3	SIDE COVER(P/S)	1	9	DRIVING GEAR	1	15	PLUG BOLT	1	21	OIL SEAL	1
4	SIDE COVER(G/S)	1	10	DRIVEN GEAR	1	16	OIL LEVEL AUGE	1	22	NAME PLATE	1
5	BEARING COVER	1	11	ROLLER BEARING	1	17	PLANE WASHER	2			
6	GEAR COVER	1	12	BALL BEARING	3	18	HEXAGON BOLT	2			

# SPECIFICATIONS

# KFM U-type blowers

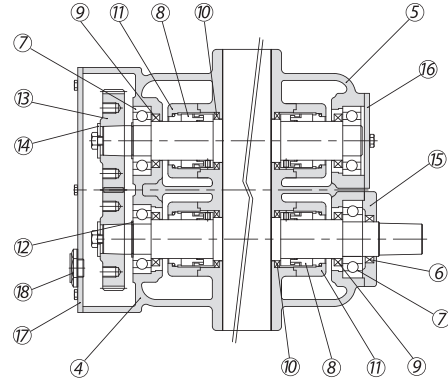
## Special Blower-Gland Packing & Mechanical Seal

Gland Packing Type



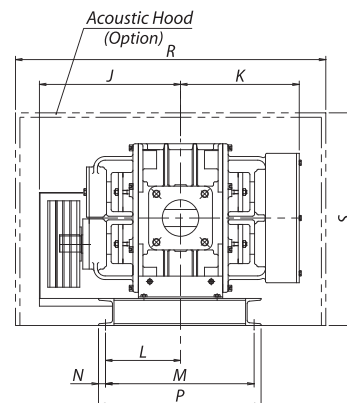
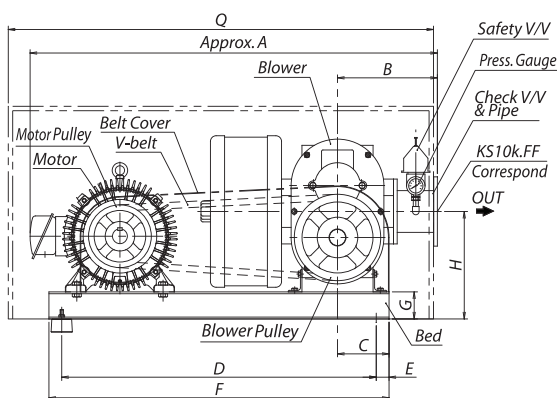
No.	DESCRIPTION	Q'TY	No.	DESCRIPTION	Q'TY
1	CASING	1	10	GLAND COVER	4
2	DRIVING ROTOR	1Set	11	SNAP RING	2
3	DRIVEN ROTOR	1Set	12	GEAR	2
4	SIDE COVER(G/S)	1	13	WASHER	2
5	SIDE COVER(P/S)	1	14	BEARING COVER-H	1
6	OIL SEAL	1	15	BEARING COVER	1
7	BEARING	4	16	GEAR COVER	1
8	GLAND PACKING	4Set	17	OIL LEVEL GAUGE	1
9	OIL SEAL	4			

Mechanical Seal Type



No.	DESCRIPTION	Q'TY	No.	DESCRIPTION	Q'TY
1	CASING	1	10	OIL SEAL	4
2	DRIVING ROTOR	1Set	11	SEAL COVER	4
3	DRIVEN ROTOR	1Set	12	SNAP RING	2
4	SIDE COVER(G/S)	1	13	GEAR	2
5	SIDE COVER(P/S)	1	14	WASHER	2
6	OIL SEAL	1	15	BEARING COVER-H	1
7	BEARING	4	16	BEARING COVER	1
8	MECHANICAL SEAL	4Set	17	GEAR COVER	1
9	OIL SEAL	4	18	OIL LEVEL GAUGE	1

## POSITIVE DISPLACEMENT BLOWER (V-BELT TYPE)



TYPE	DIM	A	B	C	D	E	F	G	H	J	K	L	M	N	P	Q	R	S
SUP/HUP080G SUP/HUP0804M		1200	260	100	940	30	1000	100	290	340	260	150	420	20	460	1300	1000	1000
SUP/HUP100G SUP/HUP1004M		1230	280	100	940	30	1000	100	290	365	285	180	440	20	480	1350	1100	1000
SUP/HUP125G SUP/HUP1254M		1480	380	160	1100	50	1200	100	390	390	300	200	450	25	500	1600	1150	1200
SUP/HUP150G SUP/HUP1504M		1550	410	160	1100	50	1200	100	390	470	380	280	490	25	540	1800	1350	1200
SUP/HUP200G SUP/HUP2004M		1950	535	210	1500	50	1600	125	490	570	480	330	570	30	630	2200	1500	1500
SUP/HUP250G SUP/HUP2504M		2380	670	300	1700	100	1900	150	650	710	630	375	720	35	790	2700	1900	1700
SUP300G SUP3004M		2790	720	300	2000	100	2200	200	760	840	770	430	720	40	800	3100	2200	1700

- Discharge end flange standard of the rest is KS10K.FF.
- The dimension of this catalog may be changed without prior notice in order to improve the performance of the product.

## Rotary Vacuum Pump Performance Table

BORE SIZE (mm)	SPEED (rpm)	Suction air volume Qs[m <sup>3</sup> /min] & Required Shaft Power La(kW) at each suction pressure																							
		-1000 mmAq		-1500 mmAq		-2000 mmAq		-2500 mmAq		-3000 mmAq		-3500 mmAq		-4000 mmAq		-4500 mmAq		-5000 mmAq		-5500 mmAq		-6000 mmAq			
		Qd (m <sup>3</sup> /min)	La (kW)	Qd (m <sup>3</sup> /min)	La (kW)	Qd (m <sup>3</sup> /min)	La (kW)	Qd (m <sup>3</sup> /min)	La (kW)	Qd (m <sup>3</sup> /min)	La (kW)	Qd (m <sup>3</sup> /min)	La (kW)	Qd (m <sup>3</sup> /min)	La (kW)	Qd (m <sup>3</sup> /min)	La (kW)	Qd (m <sup>3</sup> /min)	La (kW)	Qd (m <sup>3</sup> /min)	La (kW)	Qd (m <sup>3</sup> /min)	La (kW)		
080	1150	3.81	1.61	3.59	1.97	3.36	2.28	3.14	2.69	2.94	3.16	2.73	3.61	2.53	4.13	2.32	4.59	2.13	5.05	1.92	5.54	1.73	5.94		
	1300	4.51	1.80	4.30	2.24	4.07	2.59	3.82	3.08	3.60	3.64	3.38	4.14	3.15	4.60	2.96	5.13	2.72	5.54	2.52	6.11	2.29	6.61		
	1500	5.44	2.03	5.23	2.54	4.99	3.02	4.75	3.59	4.53	4.22	4.29	4.79	4.07	5.37	3.83	5.94	3.60	6.52	3.41	7.18	3.16	7.66		
	1750	6.62	2.29	6.40	2.93	6.15	3.48	5.91	4.18	5.69	4.95	5.45	5.61	5.20	6.36	4.96	6.98	4.74	7.69	4.49	8.49	4.22	9.17		
100	1150	5.14	1.99	4.87	2.51	4.61	2.94	4.34	3.45	4.08	4.00	3.83	4.59	3.57	5.16	3.33	5.74	3.12	6.37	2.87	6.81	2.61	7.37		
	1300	6.01	2.19	5.73	2.77	5.46	3.28	5.21	3.88	4.93	4.53	4.70	5.25	4.44	5.91	4.17	6.56	3.90	7.23	3.64	7.81	3.34	8.28		
	1500	7.17	2.46	6.93	3.17	6.65	3.78	6.37	4.47	6.09	5.25	5.82	6.02	5.55	6.82	5.26	7.51	5.01	8.28	4.72	9.04	4.45	9.67		
	1750	8.62	2.80	8.37	3.69	8.09	4.46	7.80	5.32	7.49	6.20	7.22	7.09	6.94	7.93	6.64	8.78	6.32	9.62	6.03	10.32	5.71	11.16		
125	1180	13.7	4.2	13.4	5.5	13.0	6.8	12.6	8.1	12.2	9.4	11.6	10.7	11.2	12.0	10.6	13.2	10.1	14.6	9.6	16.0	9.1	17.6		
	1470	17.6	5.1	17.3	6.7	16.8	8.2	16.4	9.8	16.0	11.4	15.4	12.9	14.9	14.6	14.4	16.3	13.9	18.1	13.4	20.0	12.8	21.7		
	1750	21.6	5.9	21.1	7.8	20.7	9.6	20.1	11.3	19.7	13.1	19.2	15.0	18.6	16.9	18.1	18.8	17.5	20.9	16.9	22.8	16.3	25.0		
150	1180	22.9	6.1	22.3	8.3	21.6	10.3	21.0	12.4	20.3	14.5	19.6	16.6	18.9	18.8	18.1	21.0	17.4	23.4	16.6	26.1	15.7	29.1		
	1470	29.3	7.7	28.6	10.4	27.9	13.0	27.2	15.6	26.5	18.3	25.8	21.1	25.0	23.7	24.2	26.5	23.5	29.3	22.7	32.5	21.7	36.0		
	1750	35.8	9.1	35.2	12.5	34.4	15.5	33.6	18.6	32.8	21.8	32.0	24.9	31.3	28.1	30.5	31.4	29.6	34.9	28.7	38.7	27.9	43.0		
200 (250)	880	42.3	11.5	42.0	15.6	41.6	19.7	41.2	23.7	40.6	27.9	40.0	31.8	39.3	35.7	38.5	39.4	37.5	42.7	36.4	45.6	35.0	48.0		
	970	47.1	12.5	46.9	17.1	46.5	21.6	46.1	26.1	45.5	30.7	44.9	35.2	44.2	39.4	43.4	43.5	42.5	47.3	41.5	50.7	40.3	53.8		
	1100	54.2	14.0	53.9	19.2	53.5	24.2	53.0	29.3	52.4	34.5	51.7	39.6	51.0	44.4	50.2	49.1	49.3	53.4	48.4	57.5	47.4	61.4		
	1180	58.5	14.9	58.1	20.4	57.7	25.7	57.2	31.2	56.6	36.7	55.8	42.0	55.0	47.1	54.2	52.0	53.3	56.7	52.3	61.0	51.2	64.9		
	1470	74.2	18.3	73.7	25.1	73.3	31.7	72.7	38.5	72.0	45.2	71.3	52.0	70.5	58.4	69.4	64.5	68.4	70.2	66.9	75.4	65.4	79.9		
250	730	70.2	17.4	69.5	23.9	68.8	30.3	68.0	37.5	67.3	45.3	66.5	52.9	65.2	60.0	63.6	67.1	61.9	73.3	59.6	78.2	57.1	82.3		
	880	87.1	20.8	86.4	28.5	85.6	36.4	84.8	45.1	84.0	54.4	83.1	63.7	81.6	72.2	79.6	79.8	77.7	87.5	75.6	94.2	72.7	98.4		
	900	89.3	21.3	88.5	29.1	87.8	37.1	86.9	46.2	86.1	55.5	85.1	64.9	83.7	73.5	81.6	81.3	79.6	89.2	77.5	95.9	74.6	100.1		
	980	98.5	22.8	97.7	31.1	96.8	39.9	95.9	49.3	95.0	58.9	94.3	68.8	92.6	77.7	90.3	85.8	88.0	93.1	85.7	99.9	82.5	104.7		
	1150	118.0	26.6	116.9	36.3	116.0	46.5	114.6	57.3	113.9	68.6	112.8	80.0	111.0	90.4	108.5	99.6	106.0	107.9	103.1	115.7	99.6	121.1		
300	730	104.8	24.9	103.7	34.3	102.8	43.7	101.5	53.9	100.4	64.7	99.0	75.6	97.3	85.6	94.9	95.2	92.0	104.0	88.7	110.8	85.0	116.2		
	800	116.9	26.9	115.4	37.2	114.2	47.0	113.1	58.2	112.1	70.2	110.3	81.9	108.3	92.9	106.0	103.2	103.3	113.2	100.1	120.8	96.5	128.0		
	880	130.0	29.4	128.8	40.7	127.7	51.9	126.4	64.0	125.3	76.9	123.9	90.0	121.6	101.8	119.2	113.1	116.0	123.2	112.7	132.4	108.6	138.7		
	960	142.8	31.7	142.1	44.0	140.8	56.1	139.5	69.2	138.2	82.8	137.0	96.9	134.7	109.6	131.8	121.6	128.4	131.8	124.5	140.2	120.1	147.0		
	1150	175.9	38.5	174.3	52.8	173.0	67.5	171.3	83.3	170.0	99.5	168.0	115.5	165.4	130.7	161.9	144.0	158.2	156.9	154.0	167.0	148.6	174.4		
350	650	203.9	48.9	202.0	67.5	200.1	85.2	197.5	105.3	194.9	126.1	191.6	146.8	188.0	167.1	184.0	186.5	179.0	204.6	172.1	218.3	165.0	228.4		
	700	227.2	51.7	224.7	71.3	222.1	90.0	219.6	110.6	217.3	133.2	213.7	155.3	209.9	176.2	205.5	196.3	199.7	213.9	192.3	227.5	183.8	237.4		
	750	248.4	54.1	245.9	74.9	243.8	94.8	240.7	117.0	238.0	140.5	235.0	163.5	230.1	184.6	224.9	204.8	218.6	222.9	210.9	236.6	202.2	248.3		
	800	270.2	56.8	267.0	79.0	264.1	100.1	261.8	123.7	259.1	148.6	255.3	172.8	251.0	195.7	245.4	216.3	239.3	236.2	232.0	251.2	223.8	263.0		
400	580	197.1	49.4	195.3	67.9	193.4	85.7	190.9	106.0	188.4	127.3	185.1	148.8	182.1	169.6	177.7	189.2	172.9	208.0	166.2	222.1	159.3	233.3		
	650	227.4	52.7	225.3	72.8	223.2	92.0	220.4	113.6	217.5	136.5	213.9	159.1	210.1	180.6	205.7	201.4	200.2	219.4	192.7	234.0	185.0	245.5		
	700	250.4	55.1	247.6	76.1	244.9	96.1	242.1	118.8	239.8	142.4	235.7	165.7	231.5	187.4	226.8	208.9	220.4	227.4	212.3	241.9	203.1	251.8		
	750	273.7	57.7	271.0	80.0	268.6	101.4	265.3	125.0	262.6	150.2	259.1	174.9	253.7	196.4	248.0	217.7	241.2	236.9	232.8	252.1	223.9	262.6		
	800	298.6	60.7	294.1	84.1	291.0	106.4	288.4	131.3	285.6	157.5	281.4	182.9	276.7	206.6	270.6	228.7	263.9	249.3	256.0	266.1	247.1	277.8		
500	580	297.5	70.5	295.4	97.2	293.4	122.9	290.0	151.2	285.6	180.8	281.6	211.3	276.2	241.0	270.4	268.9	262.0	293.4	252.2	315.5	240.0	328.7		
	650	346.2	76.2	343.2	105.5	340.2	133.6	336.0	164.9	331.8	197.6	326.5	229.9	320.8	260.6	314.4	289.6	306.5	316.2	295.8	337.7	284.1	354.8		
	700	381.4	79.9	378.2	111.0	375.3	140.8	370.8	172.5	366.3	206.9	360.6	241.0	354.5	272.4	347.6	302.7	339.0	330.4	327.6	351.7	315.3	368.0		
	750	417.4	84.0	413.9	116.9	410.9	148.4	406.1	181.8	401.2	217.3	394.7	252.4	389.0	286.4	381.6	317.9	372.8	346.9	360.6	368.9	347.5	386.9		
600	580	365.6	86.7	363.1	119.5	360.6	151.1	356.4	185.8	351.0	222.3	346.1	259.7	339.4	296.2	332.3	330.5	322.0	360.6	309.9	387.8	295.0	404.0		
	650	425.5	93.6	421.8	129.7	418.1	164.2	413.0	202.6	407.8	242.8	401.3	282.5	394.3	320.3	386.4	355.9	376.7	388.6	363.6	415.1	349.2	436.0		
	700	468.8	98.2	464.8	136.4	461.3	173.0	455.8	212.0	450.2	254.3	443.2	296.2	435.7	334.8	427.2	372.0	416.7	406.1	402.6	432.3	387.6	452.3		
	750	513.0	103.2	508.7	143.7	505.0	182.4	499.1	223.4	493.2	267.1	485.1	310.3	478.1	352.0	469.0	390.7	458.2	426.3	443.2	453.4	427.1	475.5		
700	580	429.0	101.7	426.1	140.2	423.2	177.3	418.3	218.1	411.9	260.8	406.1	304.8	398.3	347.5	390.0	387.8	377.8	423.1	363.7	455.0	346.1	474.1		
	650	499.4	109.9	495.0	152.2	490.6	192.6	484.6	237.8	478.6	285.0	470.9	331.5	462.7	375.8	453.5	417.7	442.0	456.0	426.7	487.1	409.8	511.7		
	700	550.1	115.2	545.4	160.1	541.3	203.0	534.8	248.8	528.4	298.5	520.1	347.6	511.3	392.9	501.3	436.6	488.9	476.5	472.5	507.3	454.8	530.8		
	750	602.0	121.1	597.0	168.6	592.6	214.0	585.6	262.2	578.7	313.4	569.2	364.1	561.0	413.1	550.3	458.4	537.7	500.3	520.1	532.1	501.2	558.0		

- Qs is the volume at suction status (pressure 760mmHg, temperature 20°C, relative) humidity is 75% and specific weight is 1.2kg/m<sup>3</sup>.
- The actual using motor output is to be prepared blower shaft power of La×(1.1~1.2) (shaft power : La).
- The tolerance on all air volume is ±5% as per KS B 6351.
- You could select as water cooling type in the range of color.
- You could select as backflow cooling type in the range of color.



# SPECIFICATIONS

# KFM U-type blowers

## Rotary Vacuum Pump

MARK	DESCRIPTION	Q'TY
1	BLOWER	1
2	MOTOR	1
3	BED SILENCER	1
4	BLOWER PULLEY	1
5	MOTOR PULLEY	1
6	V-BELT	1SET
7	BELT COVER	1
8	VACCUUM BREAKER	1
9	VACCUUM GAUGE	1

TYPE	DIM	A	B	C	D	E	F	G	H	I	J	K	L	M	N
SUK050V		151	175	80	455	32.5	95	520	495	167	218	130	130	360	25
SUK065V		172	196	90	475	32.5	125	540	530	167	218	130	130	360	25
SUK/HUK080V		240	203	120	620	40	40	700	540	170	240	145	145	370	25
SUK/HUK100V		280	225	120	690	40	70	770	540	170	240	145	145	370	25
SUK/HUK125V		380	275	140	900	50	80	1000	700	200	350	220	220	550	30
SUK/HUK150V		460	355	150	900	50	80	1000	750	230	371	220	220	550	30

MARK	DESCRIPTION	Q'TY
1	BLOWER	1
2	MOTOR	1
3	BED	1
4	BLOWER PULLEY	1
5	MOTOR PULLEY	1
6	V-BELT	1SET
7	BELT COVER	1
8	VACCUUM BREAKER	1
9	VACCUUM GAUGE	1

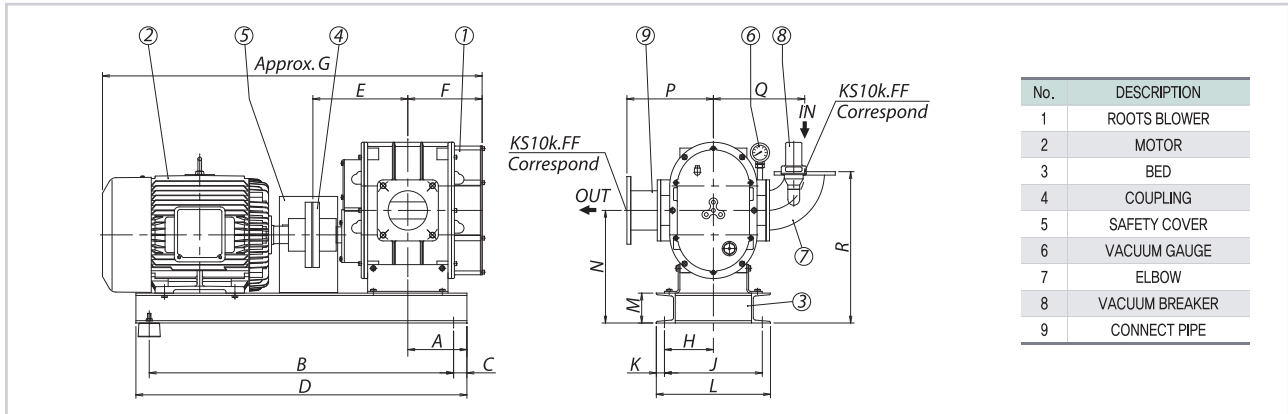
TYPE	DIM	A	B	C	D	E	F	G	H	I	J	K	L
SUK/HUK200V		570	429	210	215	150	500	1400	1260	1500	640	700	826
SUK/HUK250V		660	516	250	264	200	680	1550	1575	1700	680	750	1055
SUK300V		730	590	280	314	200	800	1800	1795	1900	720	800	1198
SUK350V		840	730	300	355	200	1000	1900	2085	2100	880	960	1385

MARK	DESCRIPTION	Q'TY
1	BLOWER	1
2	MOTOR	1
3	BED	1
4	BLOWER PULLEY	1
5	MOTOR PULLEY	1
6	V-BELT	1SET
7	BELT COVER	1
8	VACCUUM BREAKER	1
9	VACCUUM GAUGE	1

TYPE	DIM	A	B	C	D	E	F	G	H	I	J	K	L	M	N
SUT/HUT080V		294	202	188	200	430	130	600	150	900	75	135	360	400	20
SUT/HUT100V		315	225	188	210	455	130	600	150	900	75	165	400	440	20
SUT/HUT125V		400	278	256	255	576	150	800	200	1200	100	195	440	490	25
SUT/HUT150V		514	358	255	255	600	150	800	200	1200	100	245	440	490	25
SUT/HUT200V		570	429	355	300	730	180	1050	250	1550	125	270	640	700	30
SUT/HUT250V		660	516	472	385	989	180	1600	150	1900	150	255	570	640	35
SUT300V		730	590	520	385	1145	200	1800	200	2200	200	370	740	820	40
SUT350V		840	730	695	485	1390	230	2100	200	2500	200	490	920	1000	40

- Discharge end flange standard of SUK050, SUK065 model is KS 5K.FF, and flange standard of the rest is KS10K.FF.
- The dimension of this catalog may be changed without prior notice in order to improve the performance of the product.

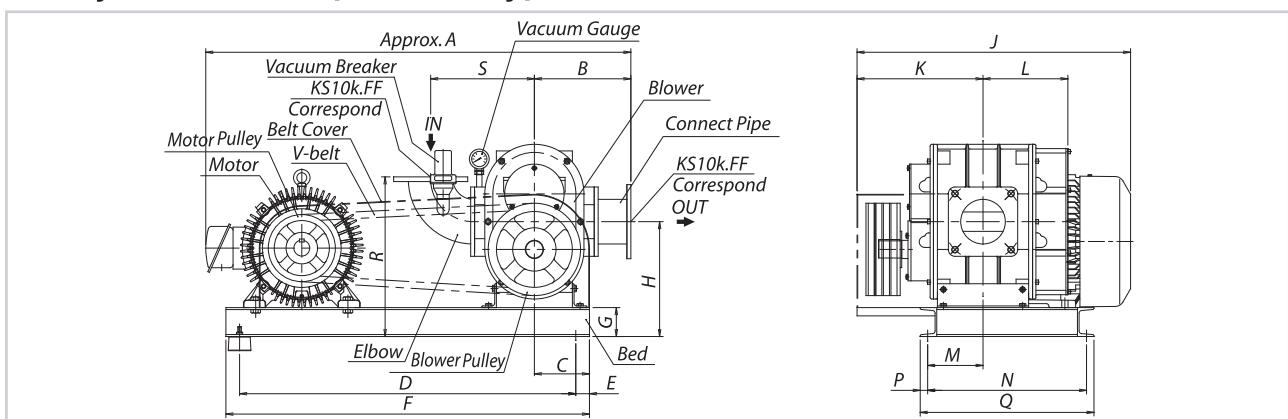
## Rotary Vacuum Pump(Coupling Type)



TYPE	DIM	Motor Fr. No.	A	B	C	D	E	F	G	H	J	K	L	M	N	P	Q	R
SUP050V	100L	85	85	500	25	550	170	140	680	80	160	20	200	75	217	215	180	302
SUP065V	112M	85	85	500	25	550	190	160	730	95	190	20	230	75	229	235	200	334
SUP/HUP080V	132S	110	690	30	750	240	200	900	110	220	20	260	100	289	260	245	414	
SUP/HUP100V	160M	140	790	30	850	265	225	1100	130	260	20	300	100	317	280	260	457	
SUP/HUP125V	180M	175	1100	50	1200	280	230	1200	160	320	30	380	125	389	380	380	589	
SUP/HUP150V	200L	255	1200	50	1300	360	310	1460	160	320	30	380	125	409	410	420	649	
SUP/HUP200V	250S	300	1400	50	1500	450	400	1800	205	410	30	470	125	495	535	450	710	
SUP/HUP250V	280S	350	1600	100	1800	570	535	2200	230	460	35	530	150	590	670	590	860	
SUP300V	280M	400	1800	100	2000	690	660	2600	230	460	40	540	200	660	720	640	980	
SUP350V	315M	430	2200	100	2400	850	740	2960	355	740	45	800	250	815	1000	870	1185	
SUP400V	-	-	-	-	3500	970	850	3800	-	-	-	1300	250	-	1030	950	-	
SUP500V	-	-	-	-	3900	1160	1050	4600	-	-	-	1600	300	-	1130	1050	-	
SUP700V	-	-	-	-	4400	1250	1100	5100	-	-	-	1900	300	-	1230	1360	-	

- Discharge end flange standard of SUP050, SUP065 model is KS 5K.FF, and flange standard of the rest is KS10K.FF.
- The dimension of this catalog may be changed without prior notice in order to improve the performance of the product.

## Rotary Vacuum Pump(V-Belt Type)



TYPE	DIM	A	B	C	D	E	F	G	H	J	K	L	M	N	P	Q	R	S
SUP050V	855	215	80	650	25	700	75	250	490	220	140	75	350	20	390	335	180	
SUP065V	875	235	80	650	25	700	75	250	490	240	160	95	350	20	390	355	200	
SUP/HUP080V	1200	260	100	940	30	1000	100	290	670	290	200	100	420	20	460	415	245	
SUP/HUP100V	1230	280	100	940	30	1000	100	290	720	315	225	130	440	20	480	430	260	
SUP/HUP125V	1480	380	160	1100	50	1200	100	390	860	330	230	140	450	25	500	590	380	
SUP/HUP150V	1550	410	160	1100	50	1200	100	390	875	410	310	220	490	25	540	630	420	
SUP/HUP200V	1950	535	210	1500	50	1600	125	490	990	500	400	260	570	30	630	705	450	
SUP/HUP250V	2380	670	300	1700	100	1900	150	650	1350	620	535	290	720	35	790	920	590	
SUP300V	2790	720	300	2000	100	2200	200	760	1600	740	660	330	720	40	800	1080	640	
SUP350V	3700	1000	350	2300	100	2500	250	915	2000	900	740	390	1010	45	1100	1285	870	

- Discharge end flange standard of SUP050, SUP065 model is KS 5K.FF, and flange standard of the rest is KS10K.FF.
- The dimension of this catalog may be changed without prior notice in order to improve the performance of the product.